



MAJOR NEW HERITAGE & CULTURAL EXPERIENCE
LOCATED IN CENTRAL LONDON, 13 MINUTE WALK
FROM COVENT GARDEN

WHAT IS THE TARGET COMPANY? |

Major heritage and attraction in Central London

Chancery Lane Tube Station, Holborn, High Holborn

Immense size of The Kingsway Exchange Tunnels

Over a mile long and tunnels of 7.6m in Diameter

Ideally located

Between the British Museum, St. Paul's Cathedral and the Tate Modern Museum

History

Deep-level Shelters WWII; James Bond's Q-Branch; Telecom Exchange Cuban Missile Crisis

Deepest accessible bar

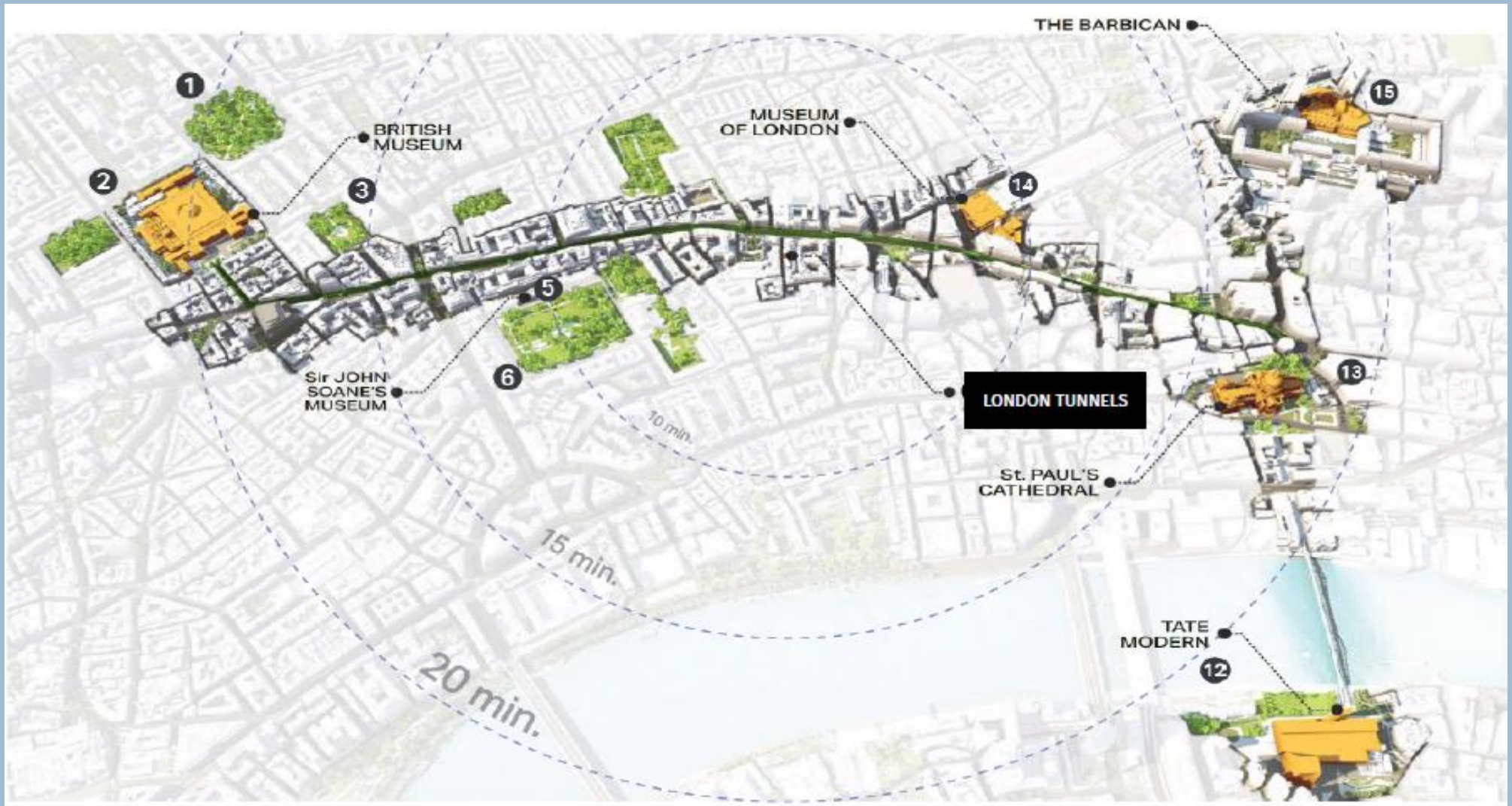
United Kingdom, Northern Hemisphere, Global

Largest High-Resolution Curved Display Canvas

Experience in Europe

"Reality can blend with Imagination"

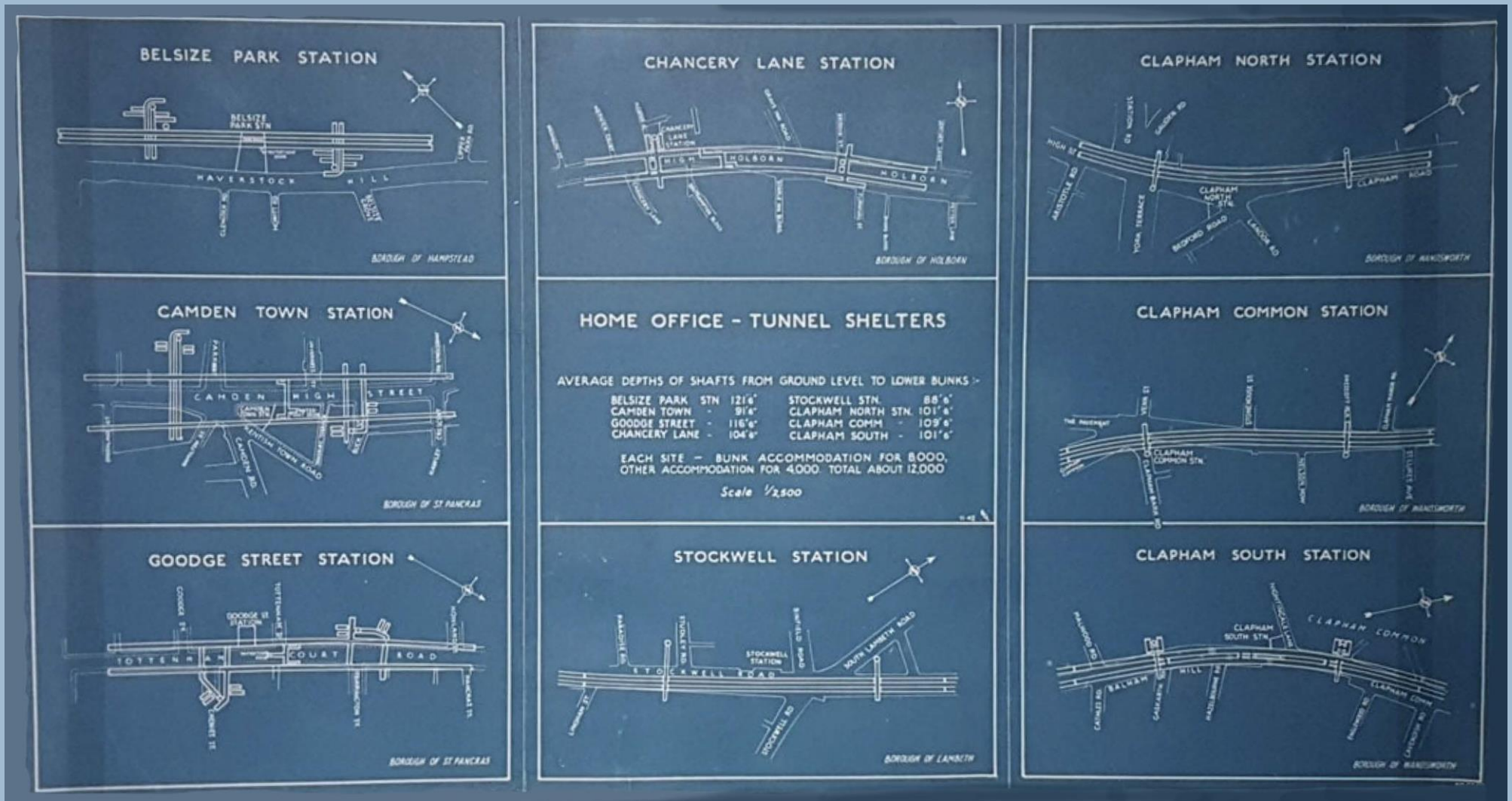
Interactive, Immersive Experience



Map of Central London showing The London Tunnels location in relation to other major tourist attractions.



Cutaway image showing the Kingsway Exchange Tunnels Location.



Blueprint showing tunnel shelters in London built in WW2.



Inside one of the smaller tunnels | 5.5m diameter.



Project Presentation

Inside one of the larger tunnels | 7.6m diameter.



Atelier des Lumières success has been through its ability to be

1. Culture within Heritage locations.
2. In Unique locations.

In 2022, the Atelier des Lumières is illuminated by the famous and colourful works of Paul Cezanne. The digital and immersive exhibition of the Atelier des Lumières presents the most significant masterpieces of Cezanne (1839-1906) such as: Still Life with Apples, The Card Players (1890-95) and The Large Bathers (circa 1906).

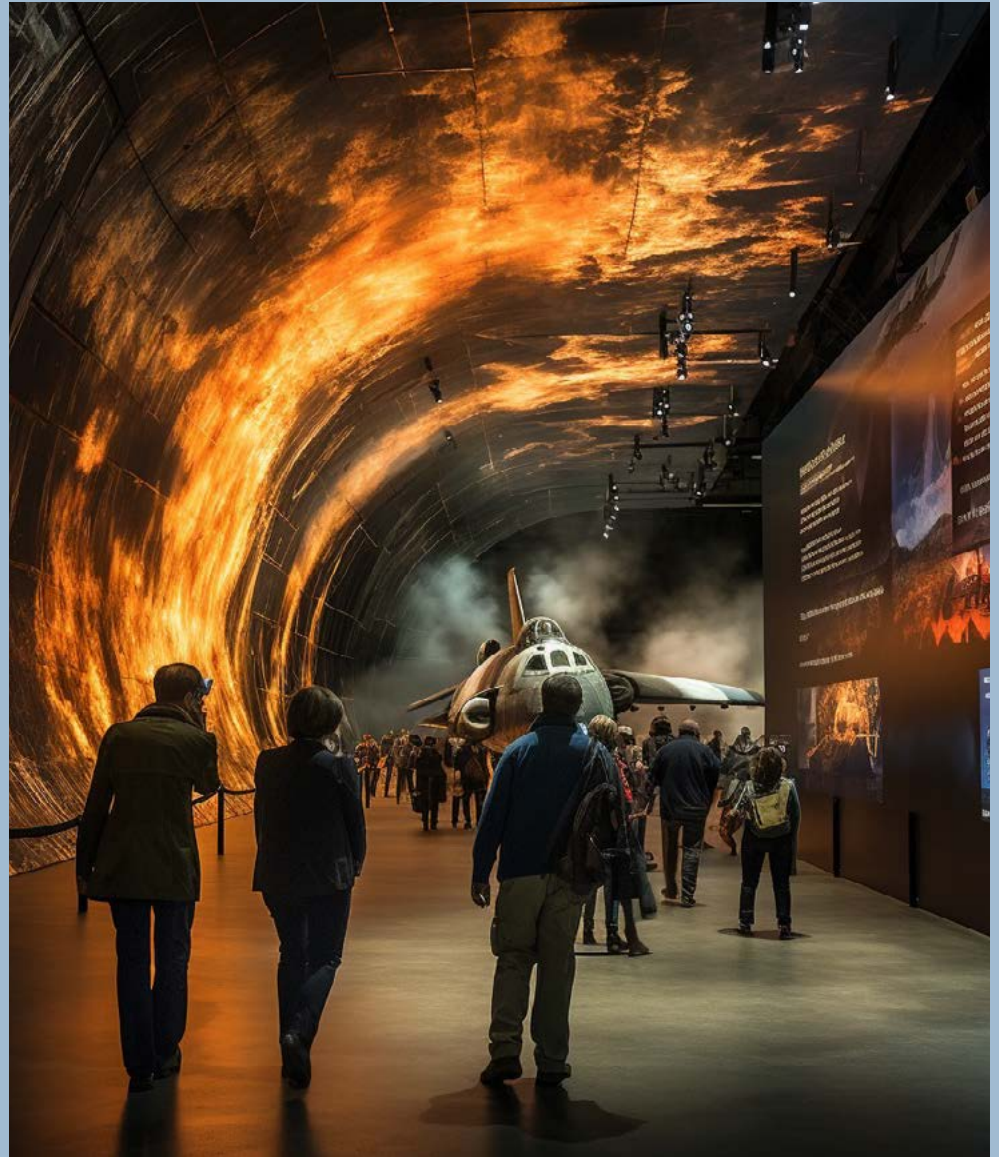
The first digital art centre in Paris, established in a fully restored former nineteenth-century foundry, the Atelier des Lumières holds digital exhibitions that immerse visitors in the pictorial worlds of the most famous artists in the history of art.

Since it opened in April 2018 with an exhibition devoted to Gustav Klimt, the Atelier des Lumières welcomed nearly 2.6 million visitors and has become one of the most important cultural sites in Paris, using the digital revolution to promote artistic creativity.

With 140 video projectors and a spatialised sound system in a surface area of 3,300 m², visitors are immersed in the images and music. The Atelier des Lumières also offers visits in Le STUDIO, where the work of several contemporary digital artists is displayed.



Inside Les Bassins Des Lumières | Bordeaux



“The London Tunnels Ltd” will recreate classic London heritage such as the London blitz using the tunnels built to shelter civilians.



"The London Tunnels Ltd" will recreate James Bond's Q Branch as a Special Operations Executives branch in the very tunnels referred to in the books



WilkinsonEyre



AECOM

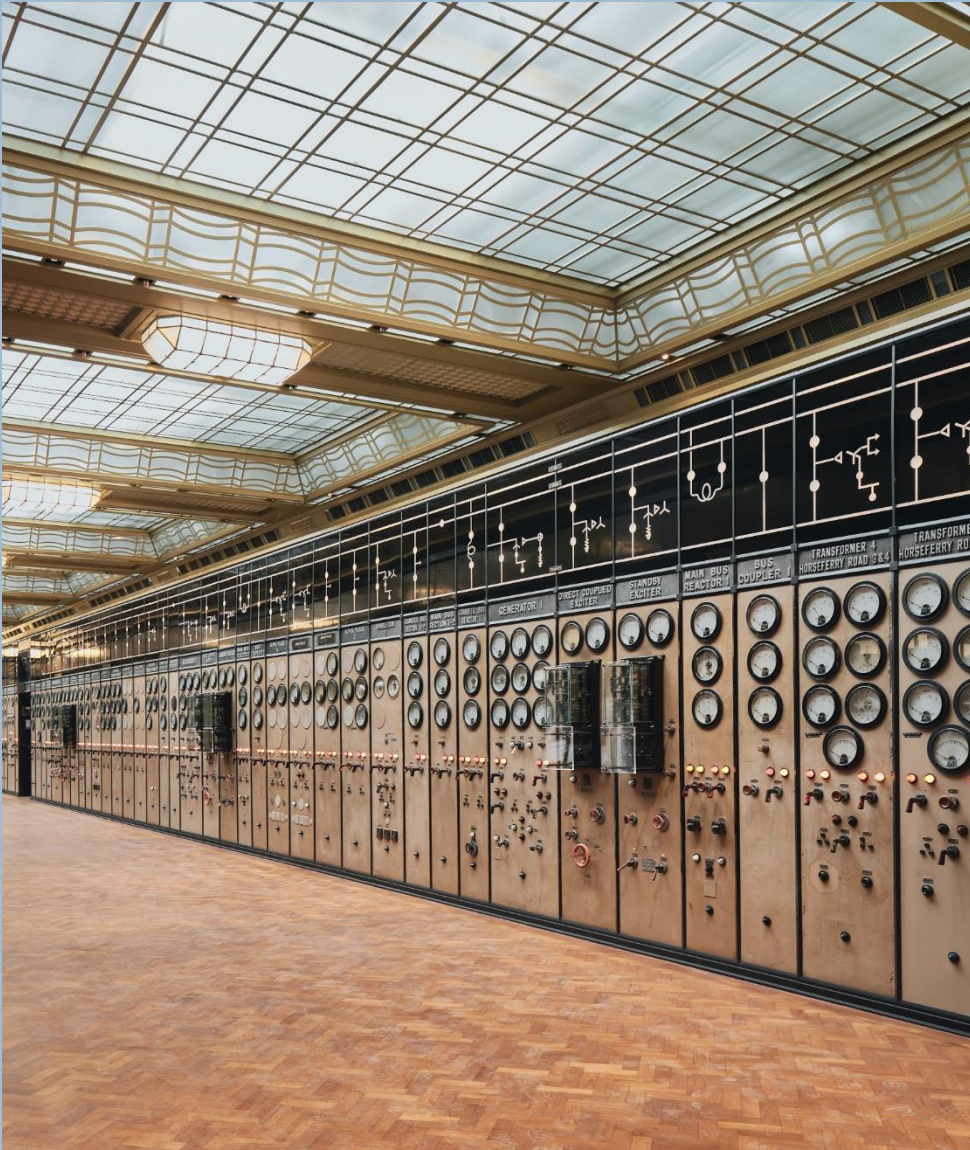
SAMSUNG



GT GARDINER
& THEOBALD

FUTURE\CITY

The London Tunnels partnered with world class counterparties to assist in achieving its objectives.



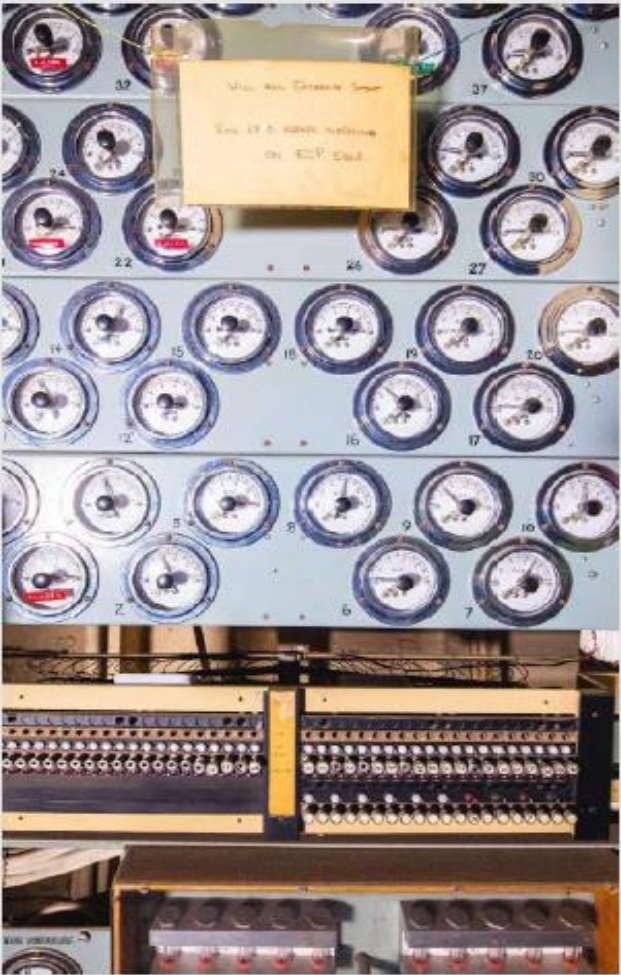
The London Tunnels is working with architects WilkinsonEyre who recently renovated Battersea Power Station in London.

HISTORY

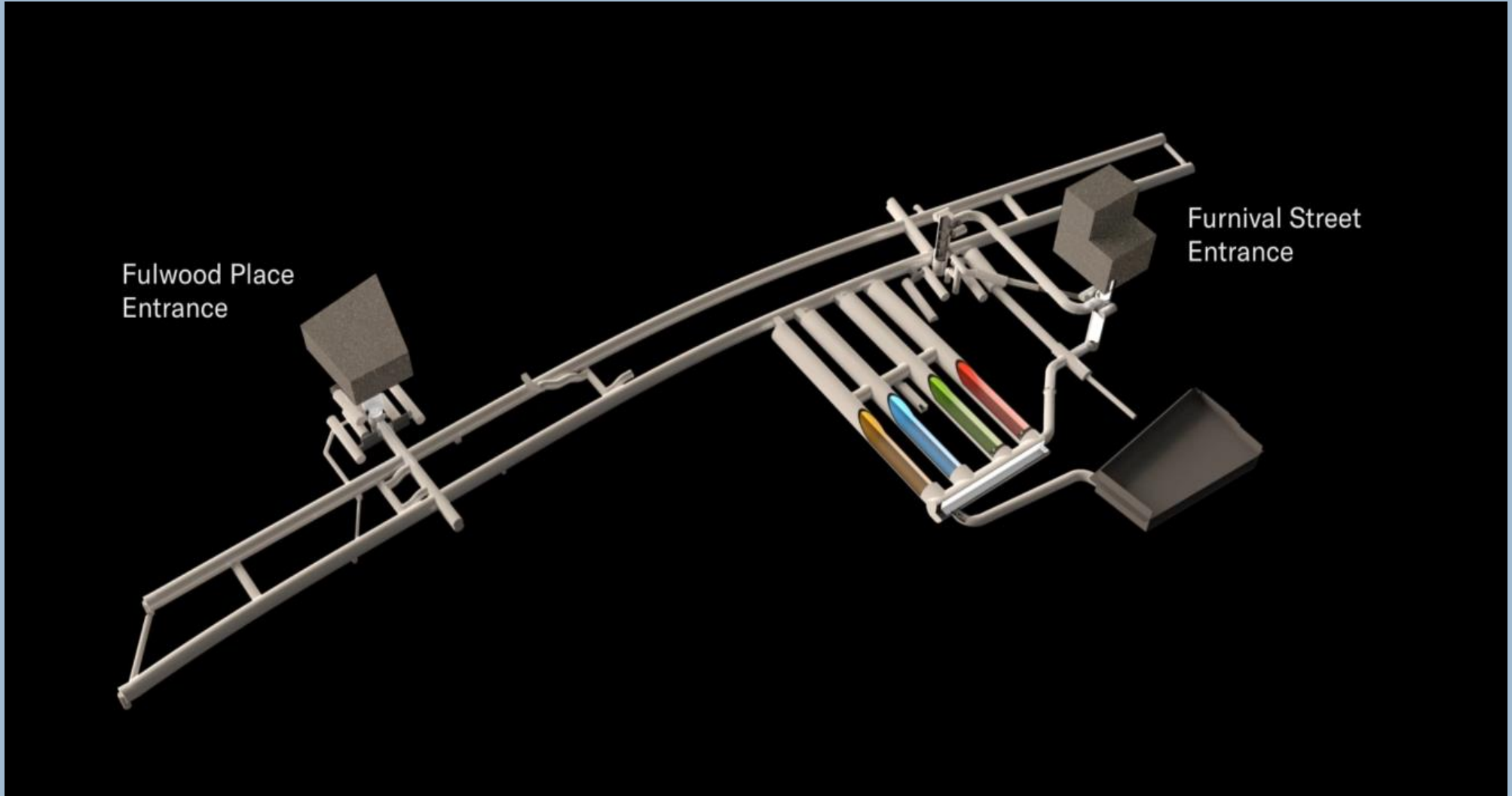


The Kingsway Exchange Tunnels were constructed in and have a rich heritage being built to shelter the public during the London Blitz.

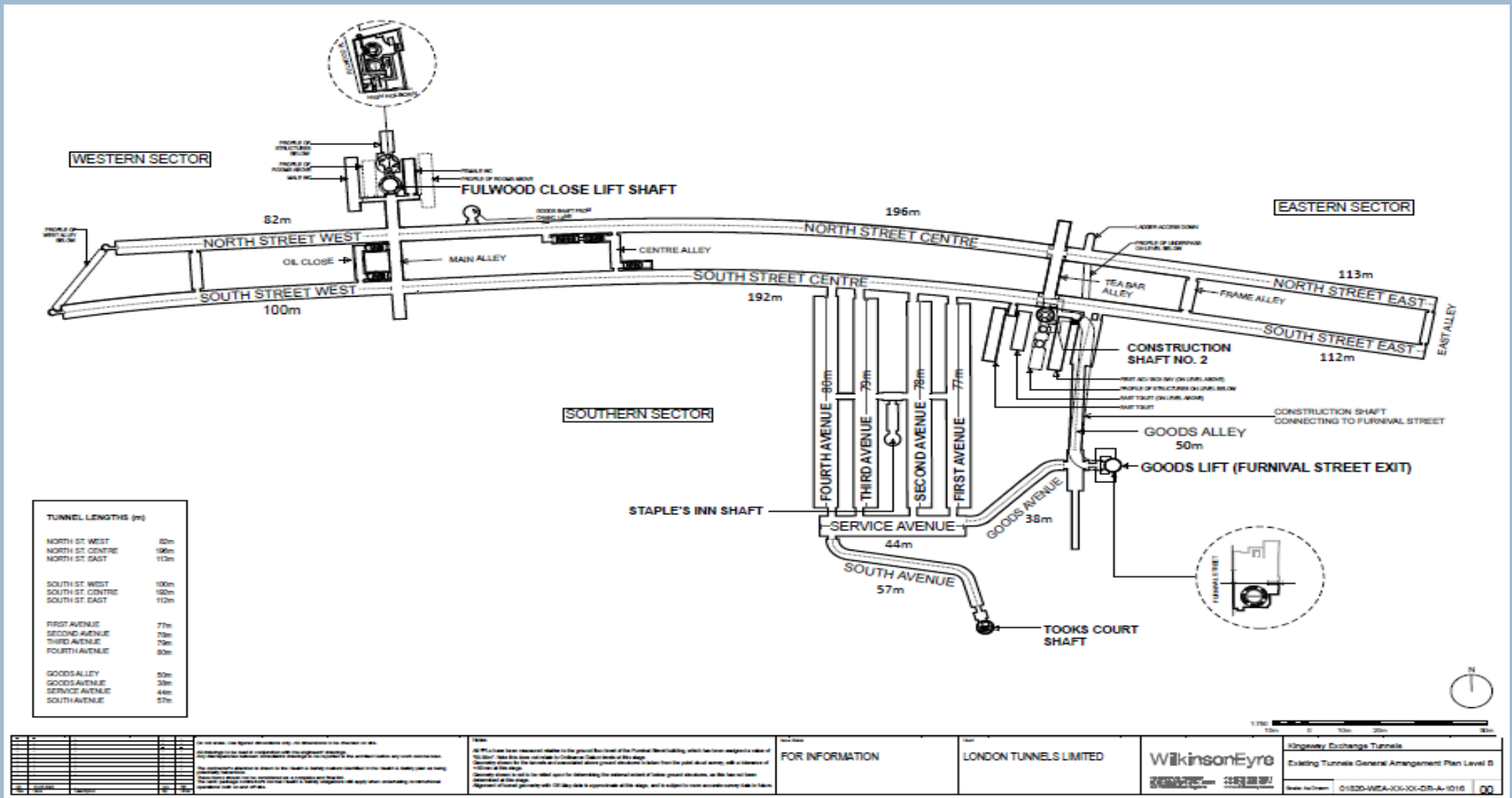
HISTORY - TO BE RETAINED



The Kingsway Exchange Tunnels were used for communications during the Cuban Missile Crisis and the equipment used will be retained to preserve heritage.



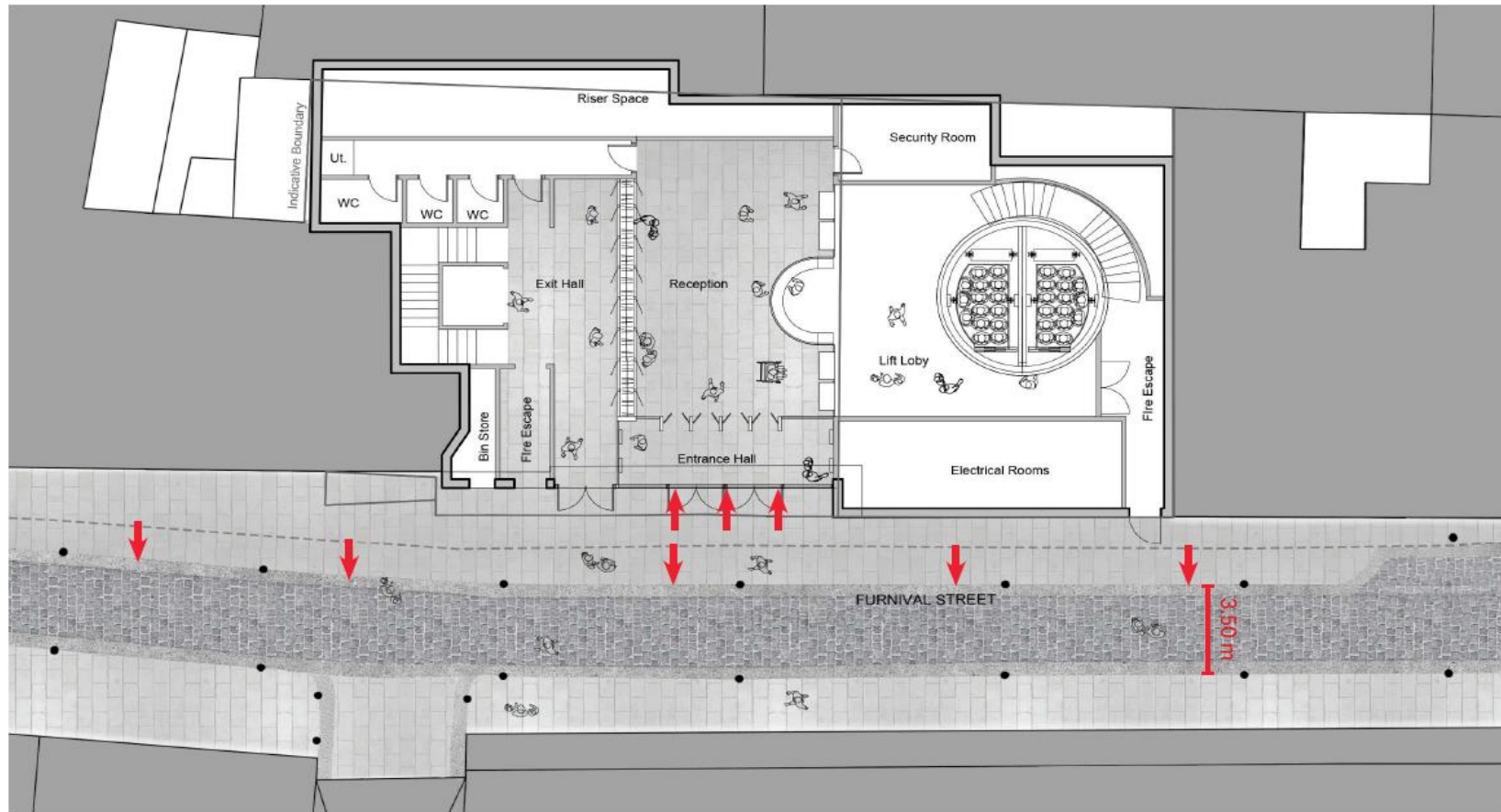
Architectural illustration showing the entrance points to the Kingsway Exchange Tunnels.



Plan of the tunnels from an aerial view, produced by WilkinsonEyre.

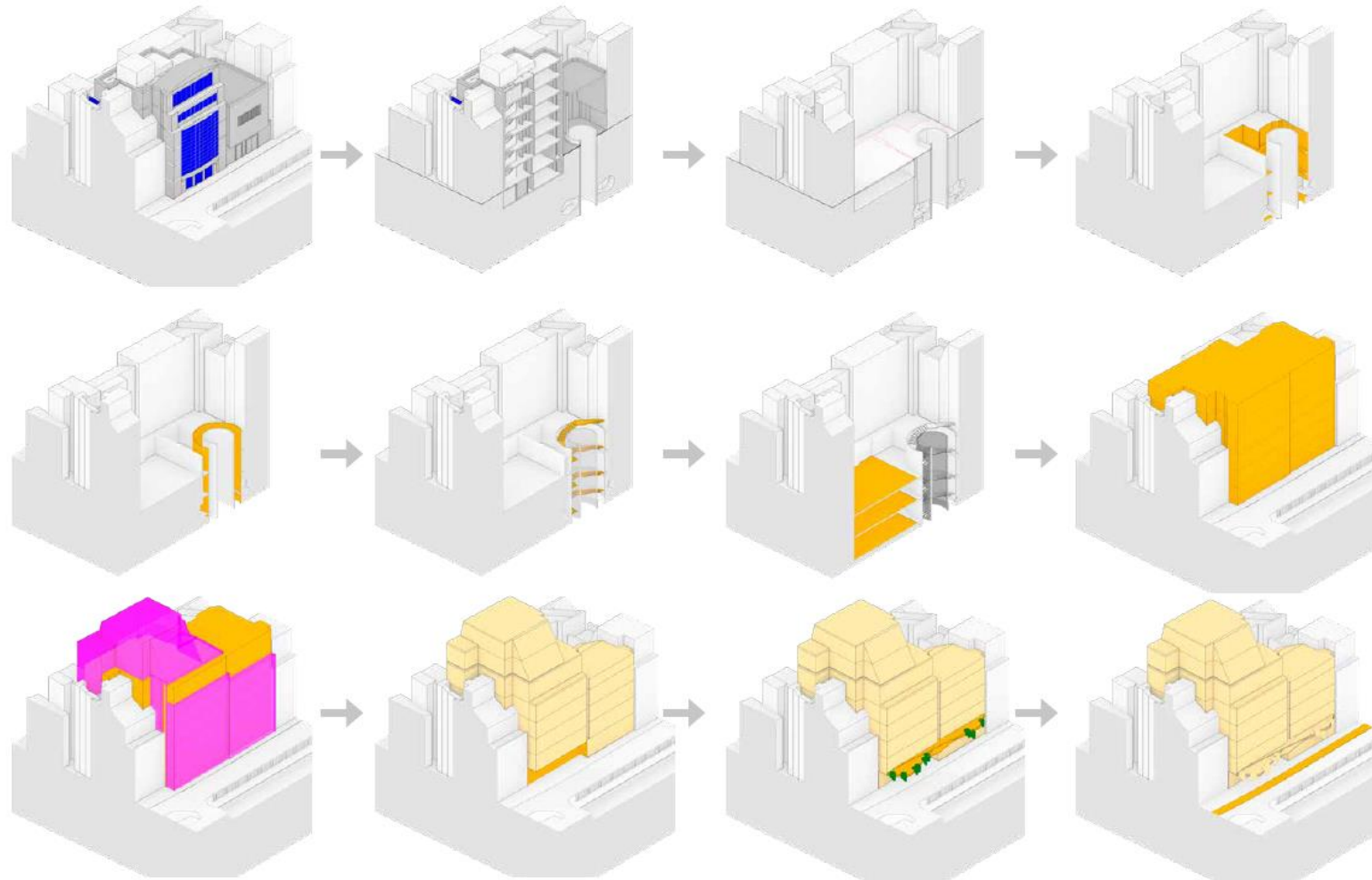
Furnival Street

Setbacks and pavement widening



Architectural illustration by WilkinsonEyre showing aerial view of pavement widening to be done.

Masing Sequence - Furnival Street



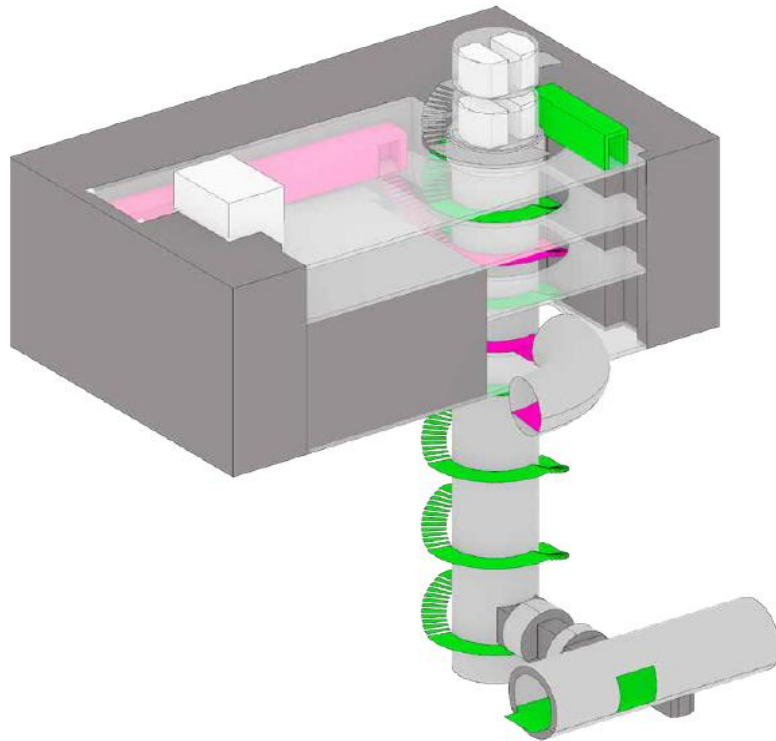
15

The London Tunnels

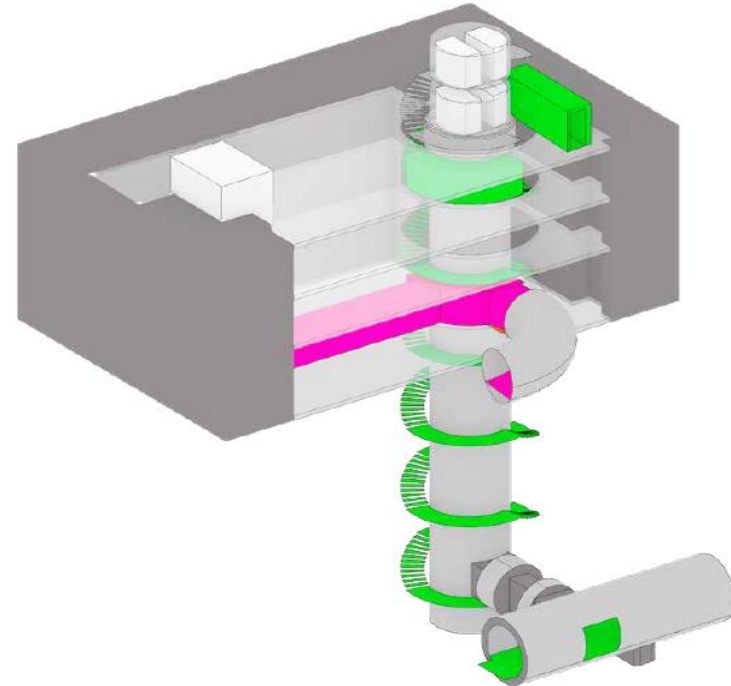
Architectural illustration by WilkinsonEyre showing the masing sequence Furnival street entrance.

Fire Escape Study - Furnival Street

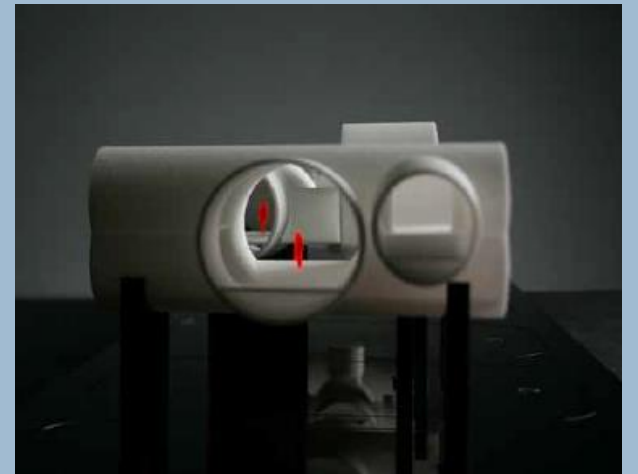
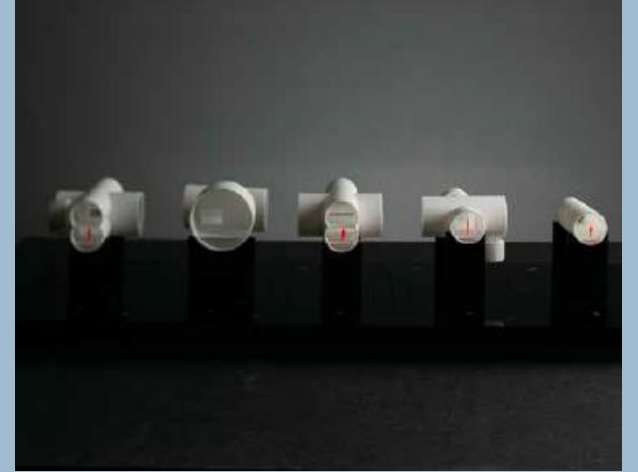
Option 1 - single basement @ 40 FS



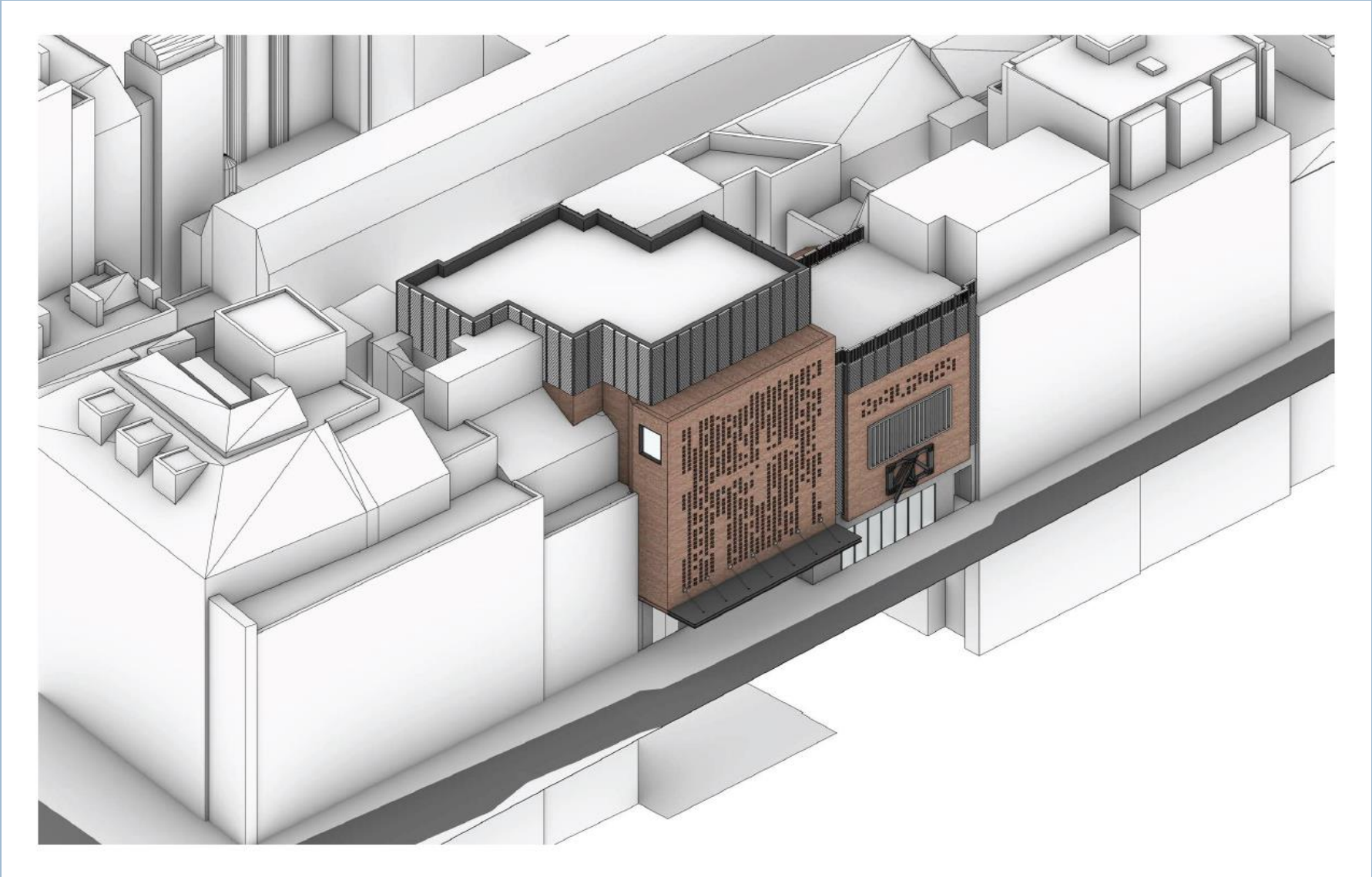
Option 2 - extended basement @ 40 FS



Architectural illustration by WilkinsonEyre showing the fire escape plans.



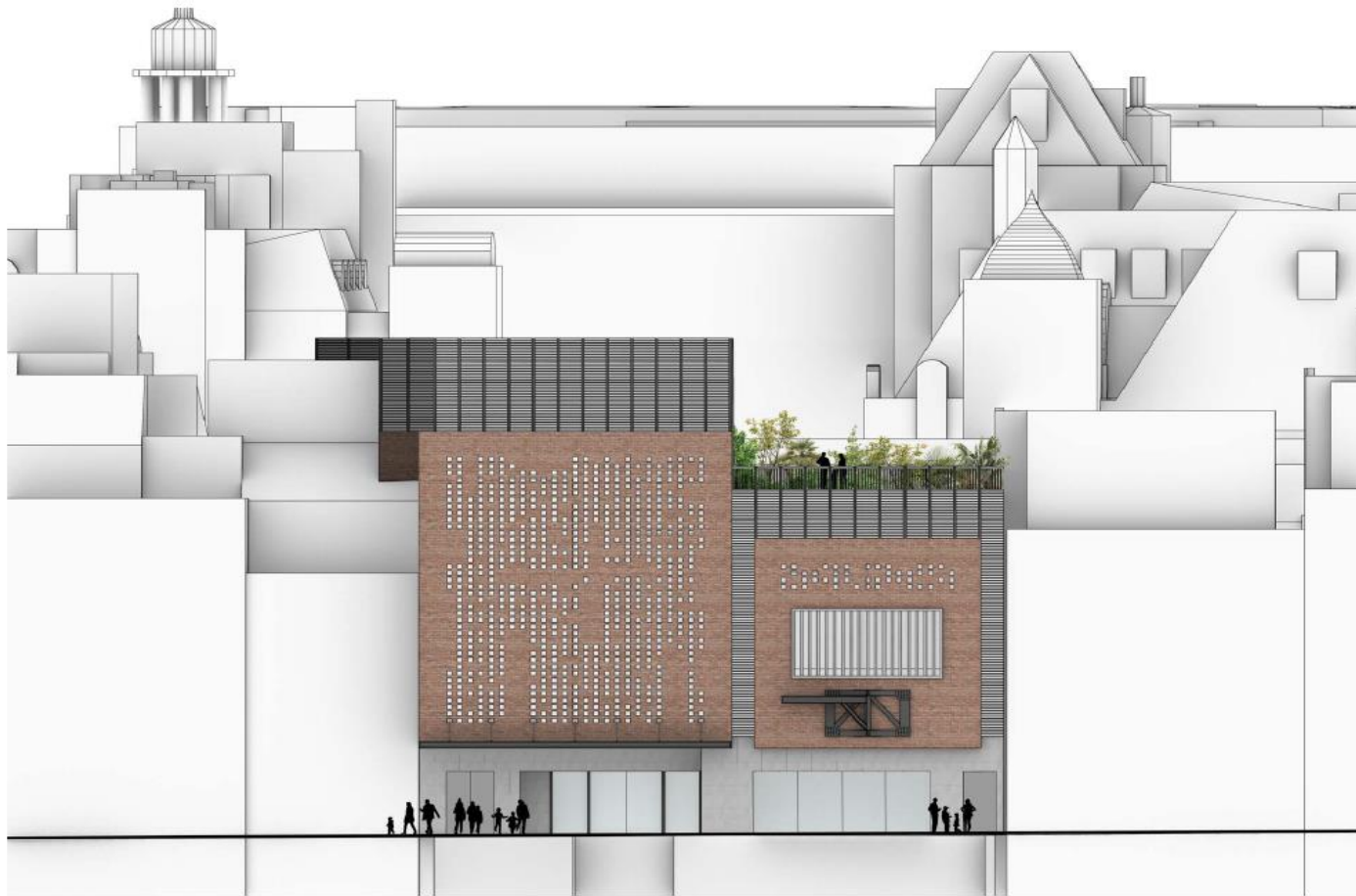
Models of the Kingsway Exchange Tunnels created by WilkinsonEyre.



Architectural illustration by WilkinsonEyre showing the Elevator Entrance Building from the outside.

Furnival Street

Elevation (By Day)



Architectural illustration by WilkinsonEyre showing the Elevator Entrance Building.

Furnival Street

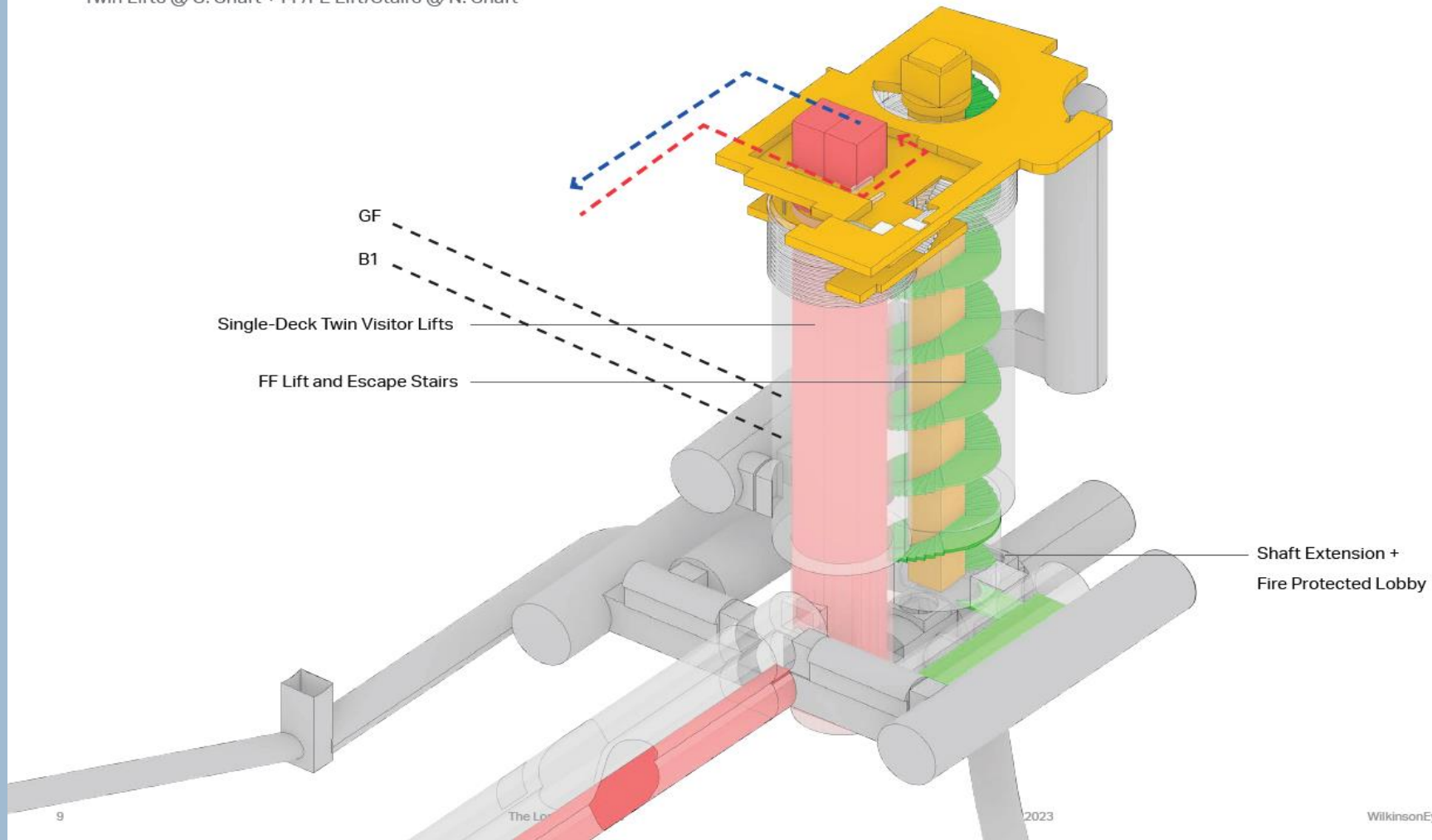
Street View and Canopy



Architectural illustration by WilkinsonEyre showing the Elevator Entrance Building from the outside.

Drop Level Lift Entry

Twin Lifts @ S. Shaft + FF/FE Lift/Stairs @ N. Shaft

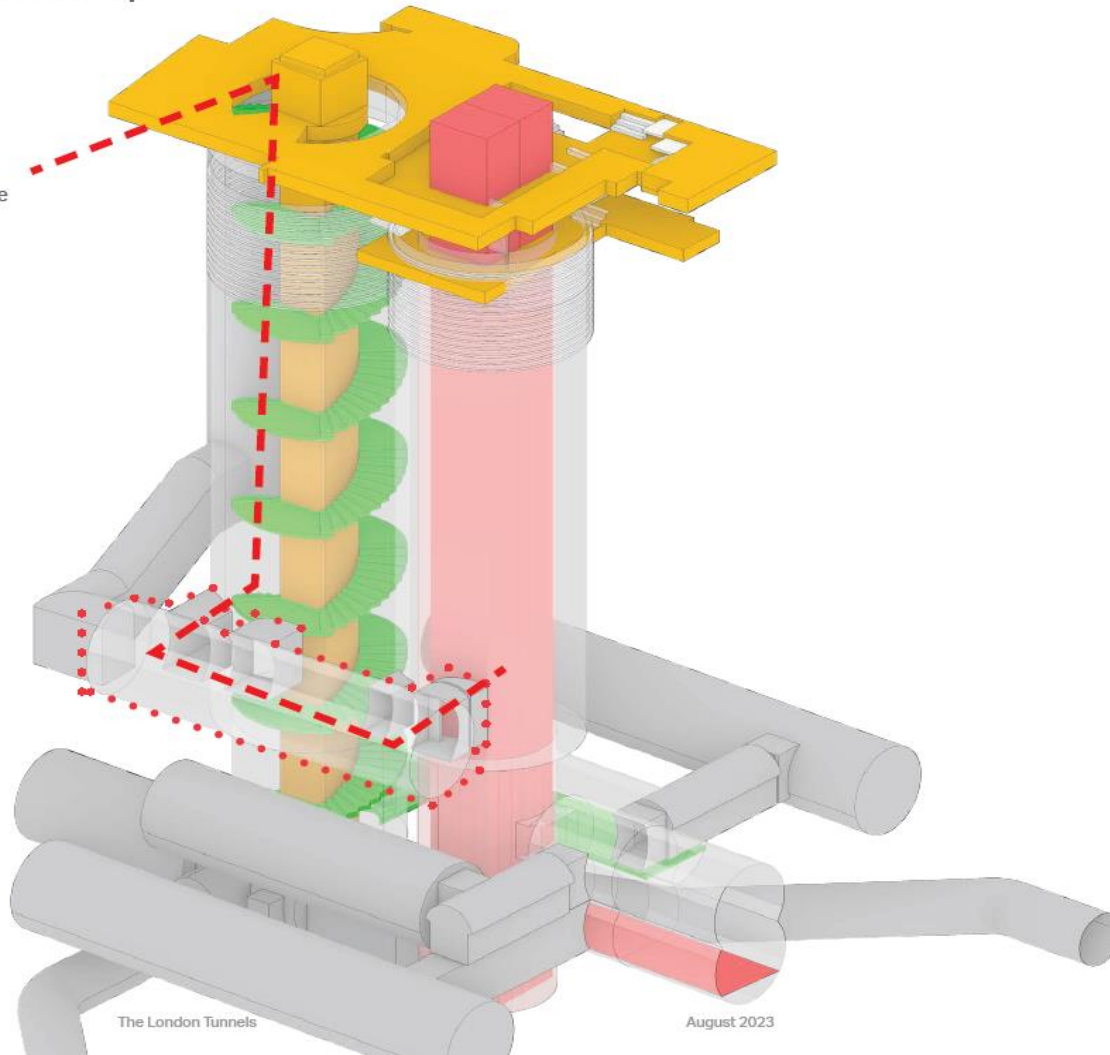


Architectural illustration by WilkinsonEyre showing the lift entrance mechanics.

MEP - New Location Req.

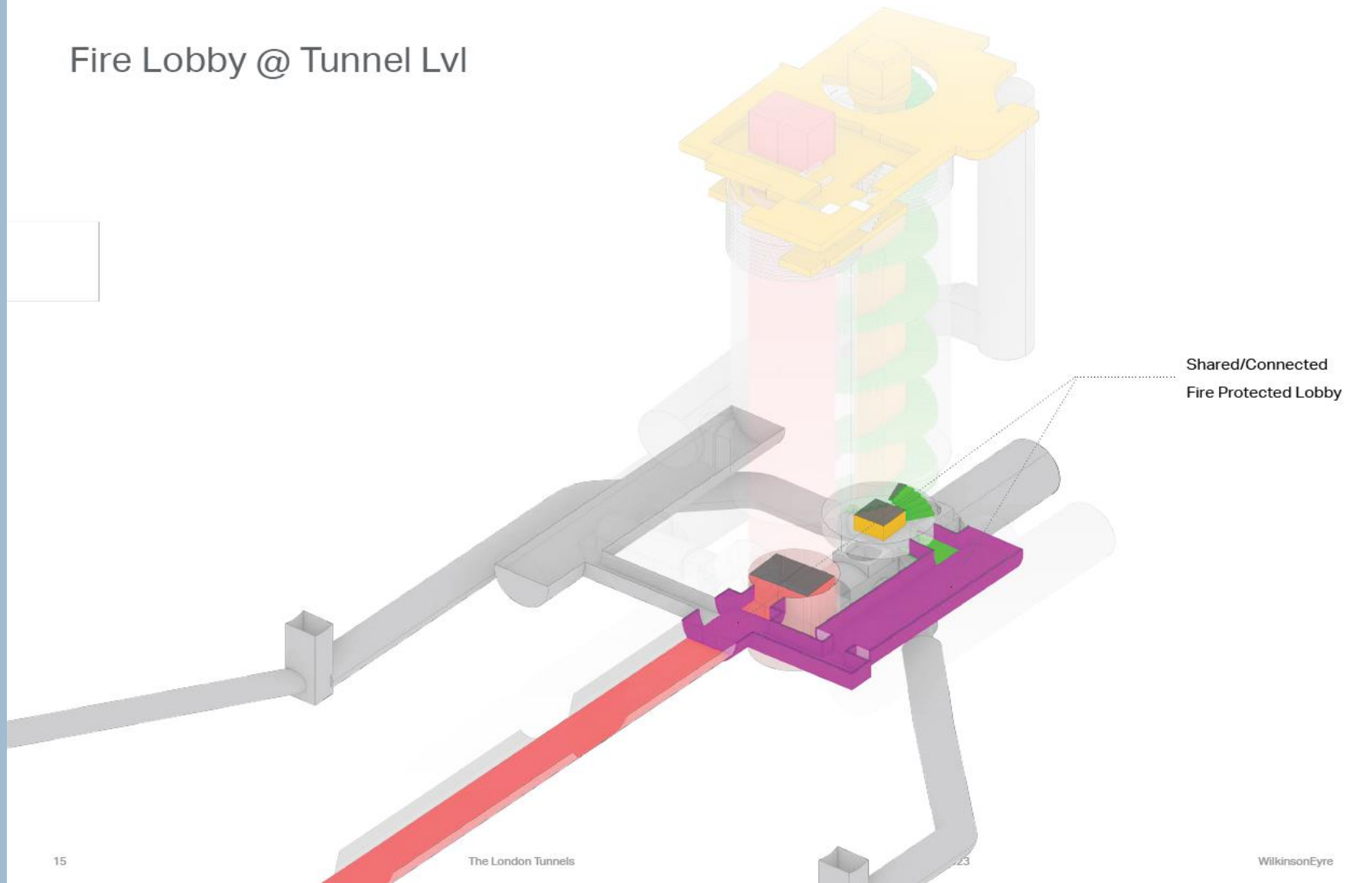
Vertical Shaft MEP

New MEP location is required to go through the shaft into the available space in the tunnels



Architectural illustration by WilkinsonEyre showing the lift entrance mechanics.

Fire Lobby @ Tunnel Lvl



15

The London Tunnels

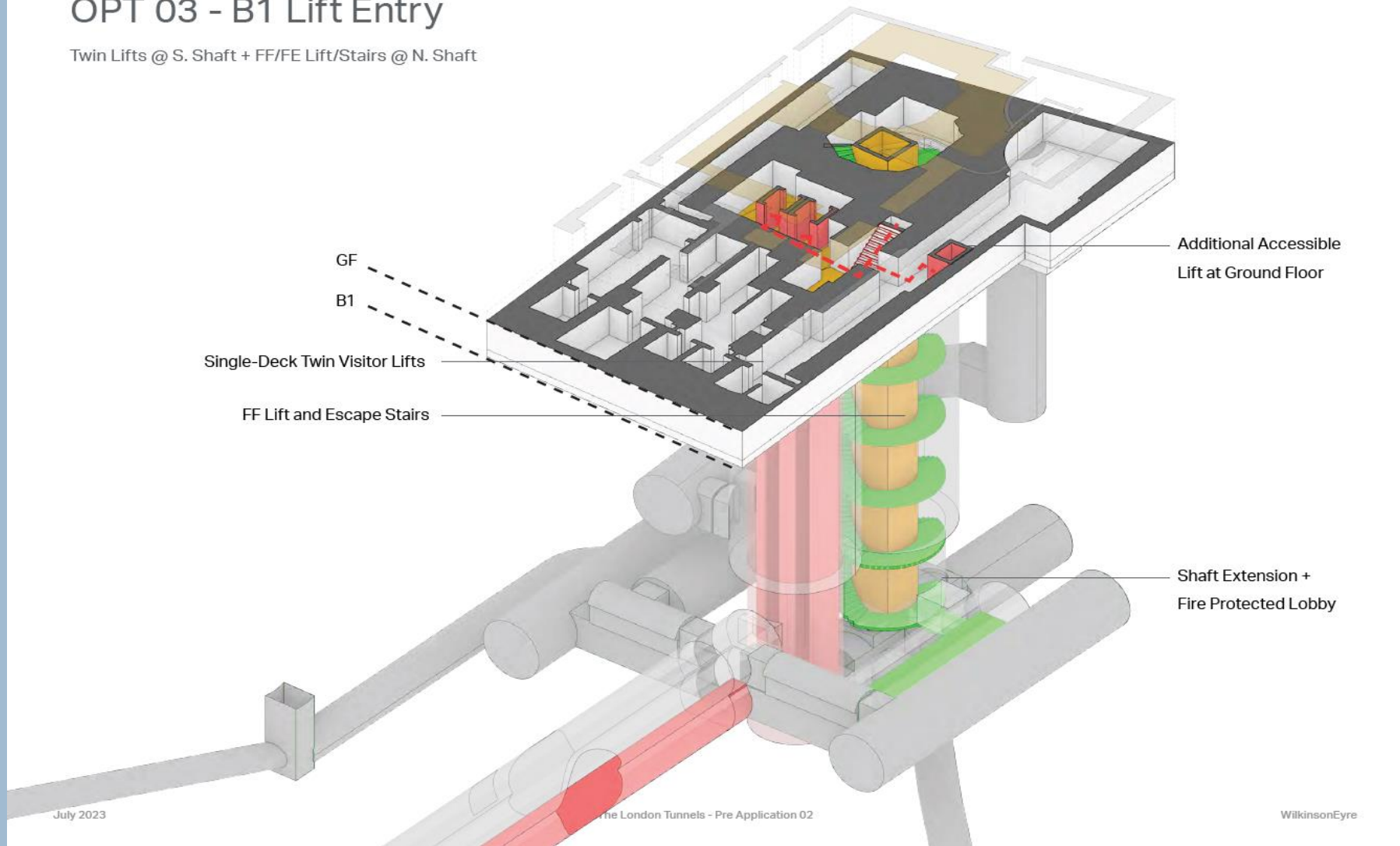
23

WilkinsonEyre

Architectural illustration by WilkinsonEyre showing the lift entrance mechanics.

OPT 03 - B1 Lift Entry

Twin Lifts @ S. Shaft + FF/FE Lift/Stairs @ N. Shaft



Architectural illustration by WilkinsonEyre showing the lift entrance mechanics.



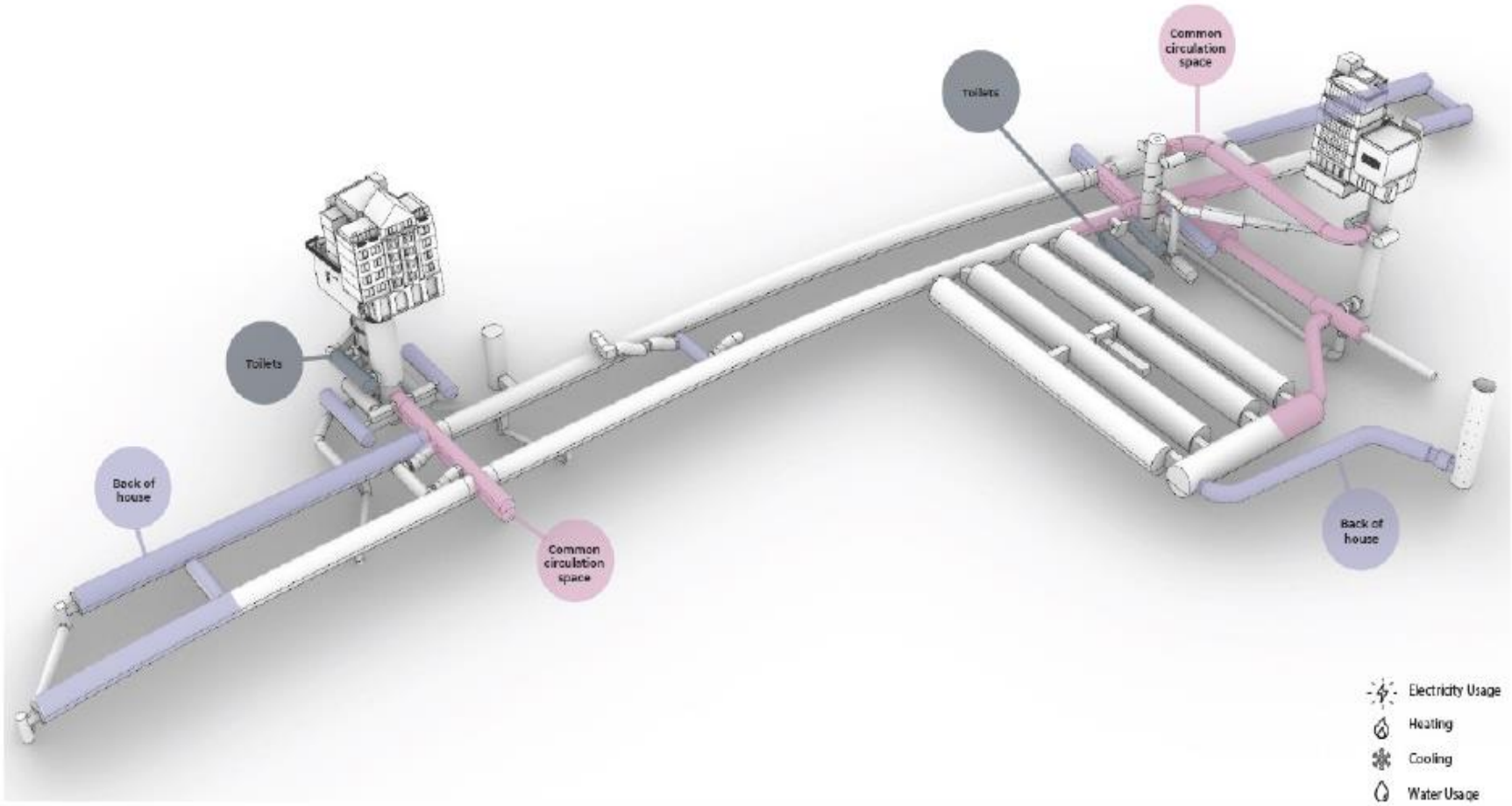
Picture of Furnival Street taken from outside.



Picture of Furnival Street taken from outside.

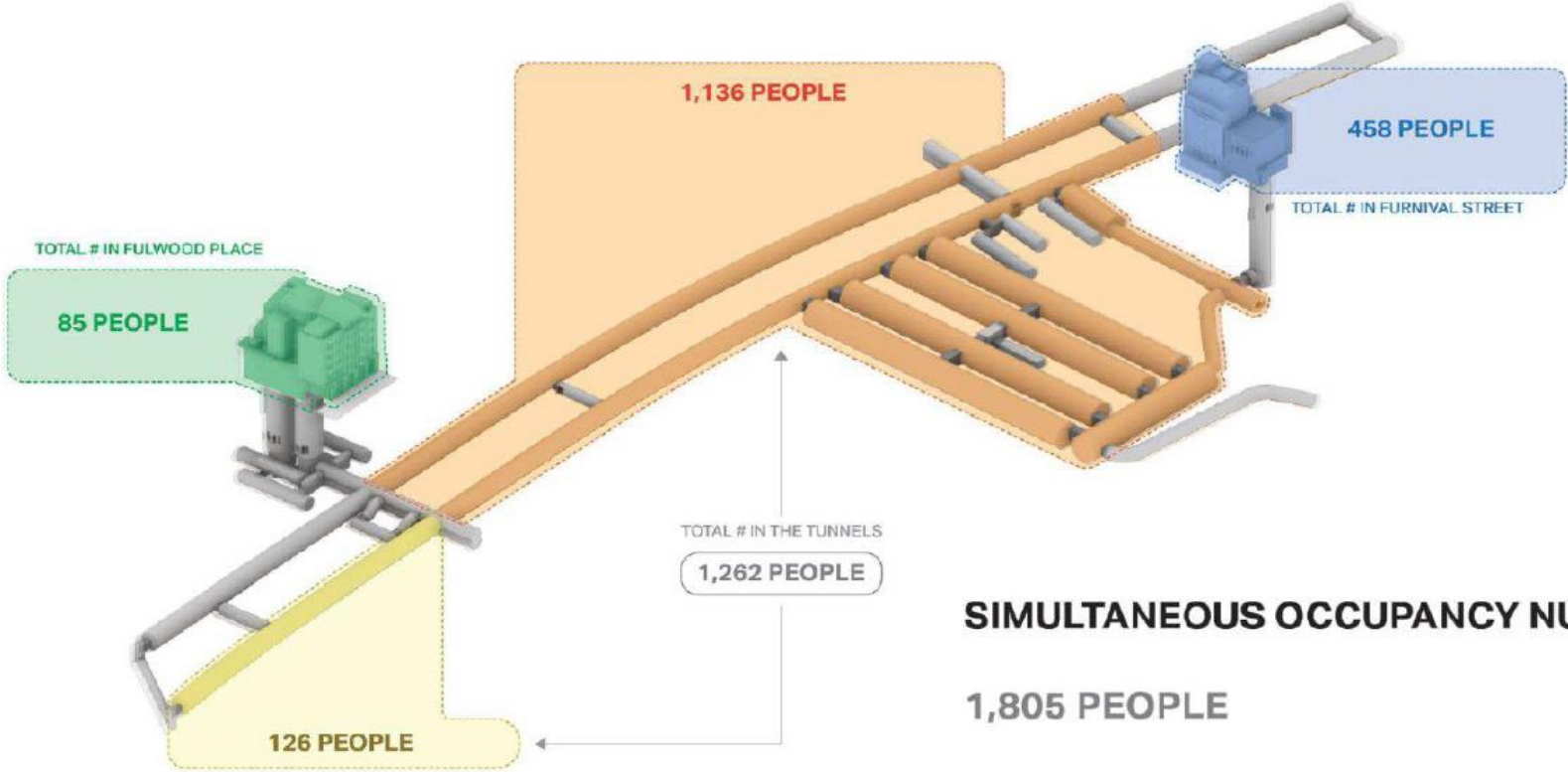
LONDON TUNNELS

ZONING BACK OF HOUSE, COMMON CIRCULATION SPACE AND TOILETS

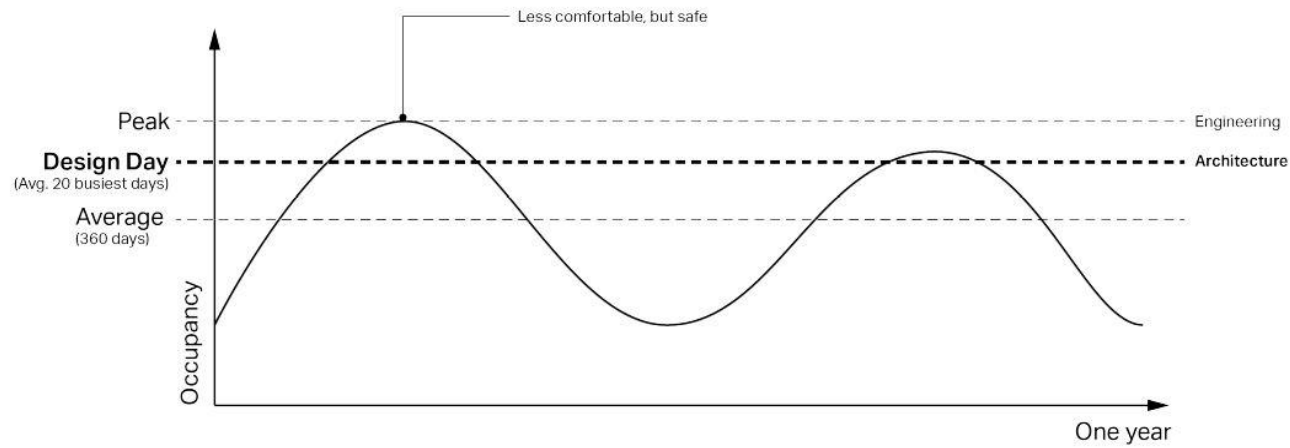


3D Architectural illustration by WilkinsonEyre of the Kingsway Exchange Tunnels.

Occupancy Brief



3D Architectural illustration by WilkinsonEyre showing the capacity of The London Tunnels in operation.

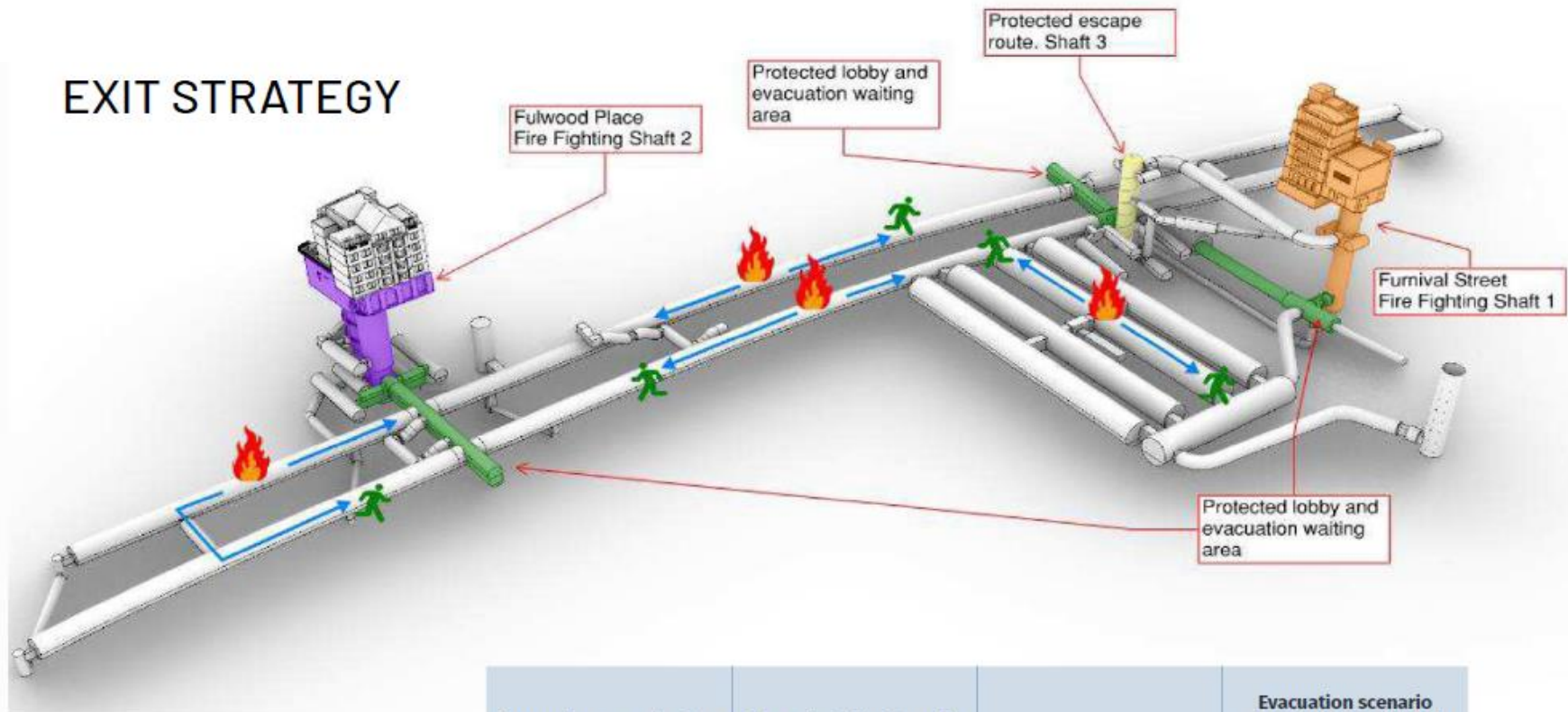


Area in Tunnels (m2) 4900

	Annual	Monthly (11%)	Weekly (x4.43)	Design Day (10h)	Throughput at Tunnels (pp/h)	Avg. Occupancy pp/h (over 360 days)	Average Density
Density at ~3.5 sqm per person	3,001,661	330,183	74,533	11,180	1,118 WSP	834	5.9
Density at 10.0 sqm per person	1,315,576	144,713	32,667	4,900	490	365	13.4
Density at 6.53 sqm per person	2,013,636 Target Occupancy	221,500	50,000	7,500	750	559	8.8 WEA

Captaincy simulations of The London Tunnels in operation by WilkinsonEyre.

EXIT STRATEGY



Evacuation scenario time (minutes)	Diversity Split of people exiting via stairs and lifts	Evacuation locations	Evacuation scenario occupancy cap (mixed simultaneous and non simultaneous)
15	30% evac via lifts 70% evac via stairs	1 active exit location	1398 / 2004
		2 active exit locations	3402

Fire Escape strategy of The London Tunnels in operation by WSP.



wsp

The London Tunnels

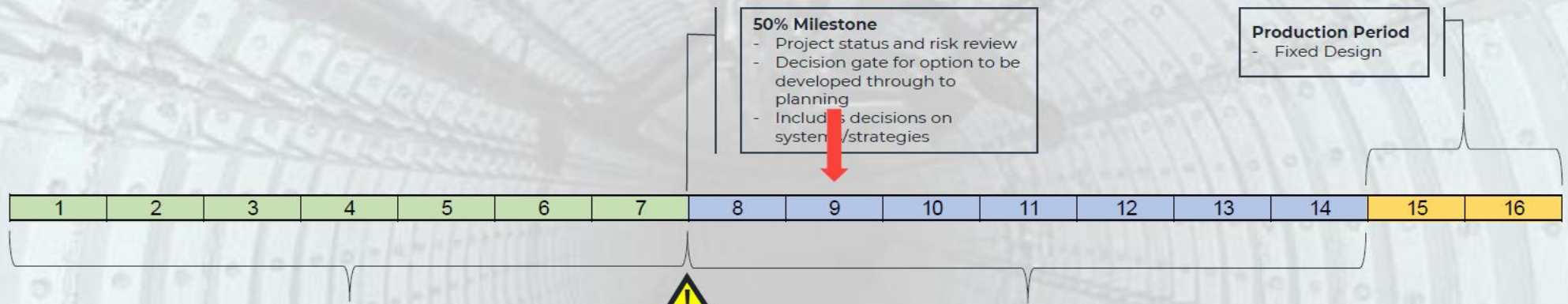
PTM Progress Reporting

02/08/2023

WSP are one of the counterparties of The London Tunnels, WSP worked on construction of the Elizabeth Line.

Stage-2 programme Outline

- Target outline - subject to planning input



50% Milestone

- Project status and risk review
- Decision gate for option to be developed through to planning
- Includes decisions on system /strategies

Production Period

- Fixed Design

- Options development period
- 3 Core Project Options
- Stakeholder engagement period (all inputs required during this phase)
- Engineering strategy/system sub-options
- Stage-2 Surveys (info on 39/40FS)
- Fire Strategy outline developed to an agreeable point with CoL BCO.
- Some initial modelling TBC.

- Stage-2 Design Development for planning
- Iterative development of selected options
- Modelling commences

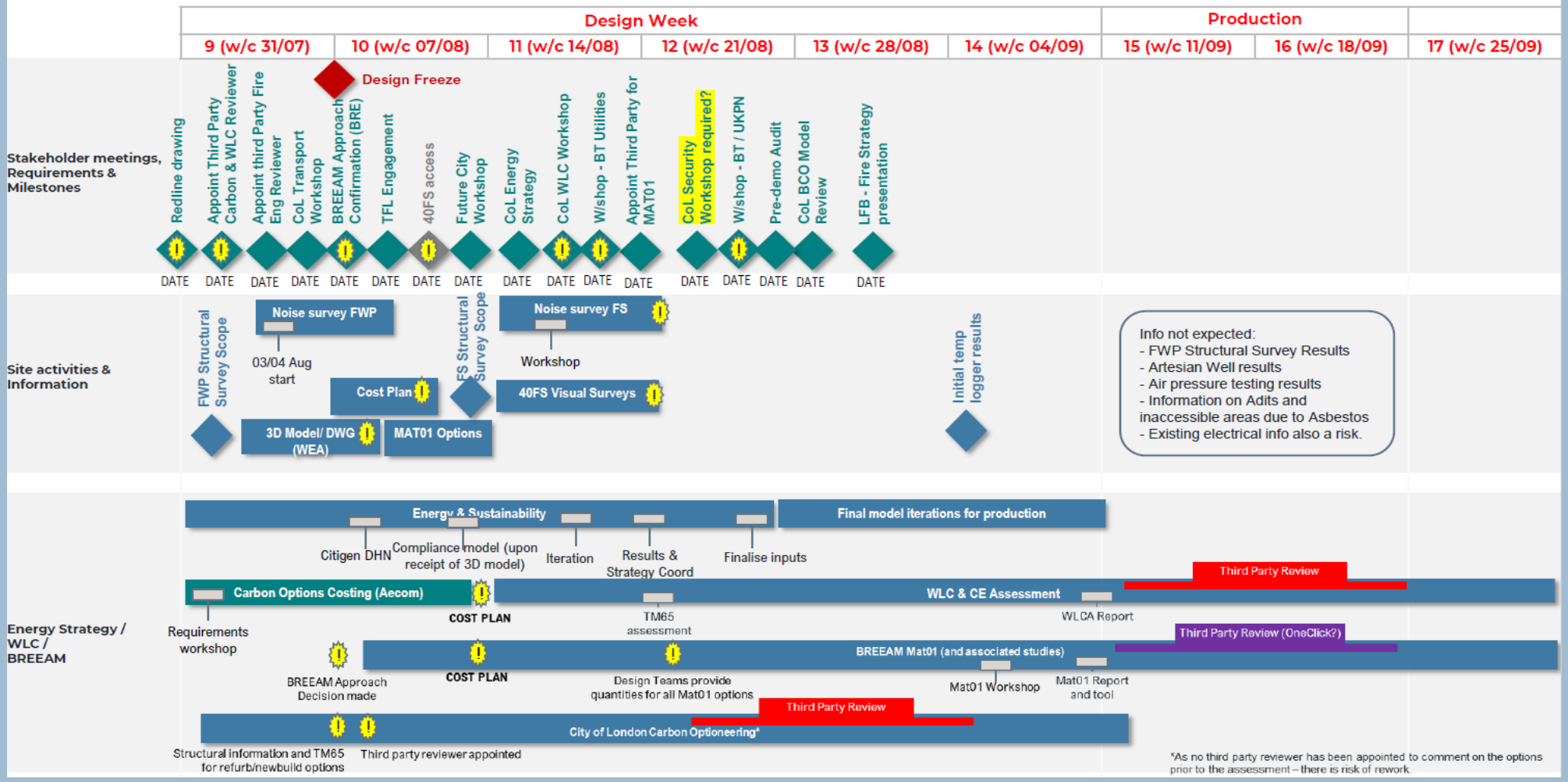


Project risks on following slide – there are few items that potentially impact this milestone.

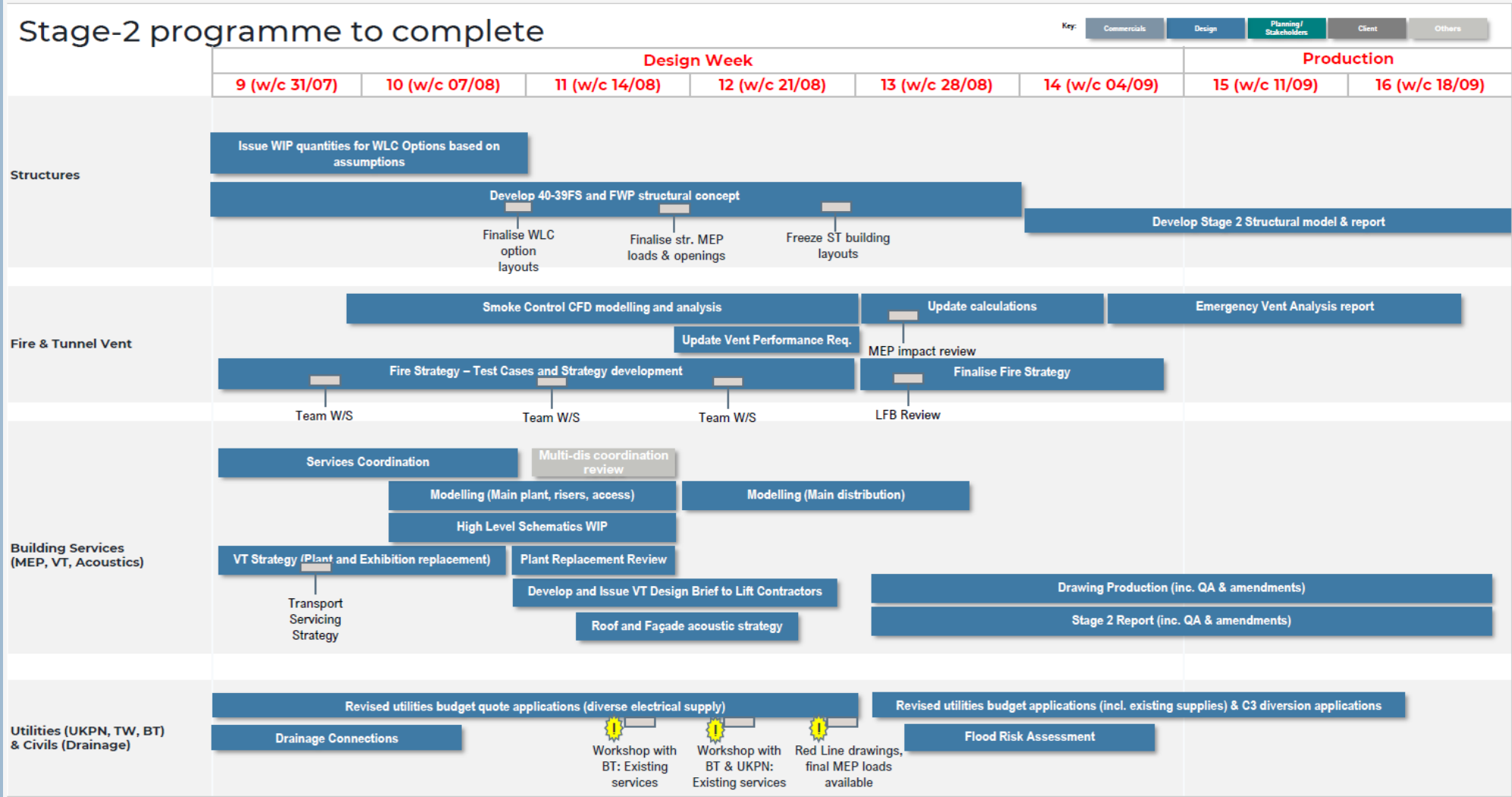
Target outline provided by WSP.

Stage-2 programme to complete

Key: Commercials Design Planning/ Stakeholders Client Others



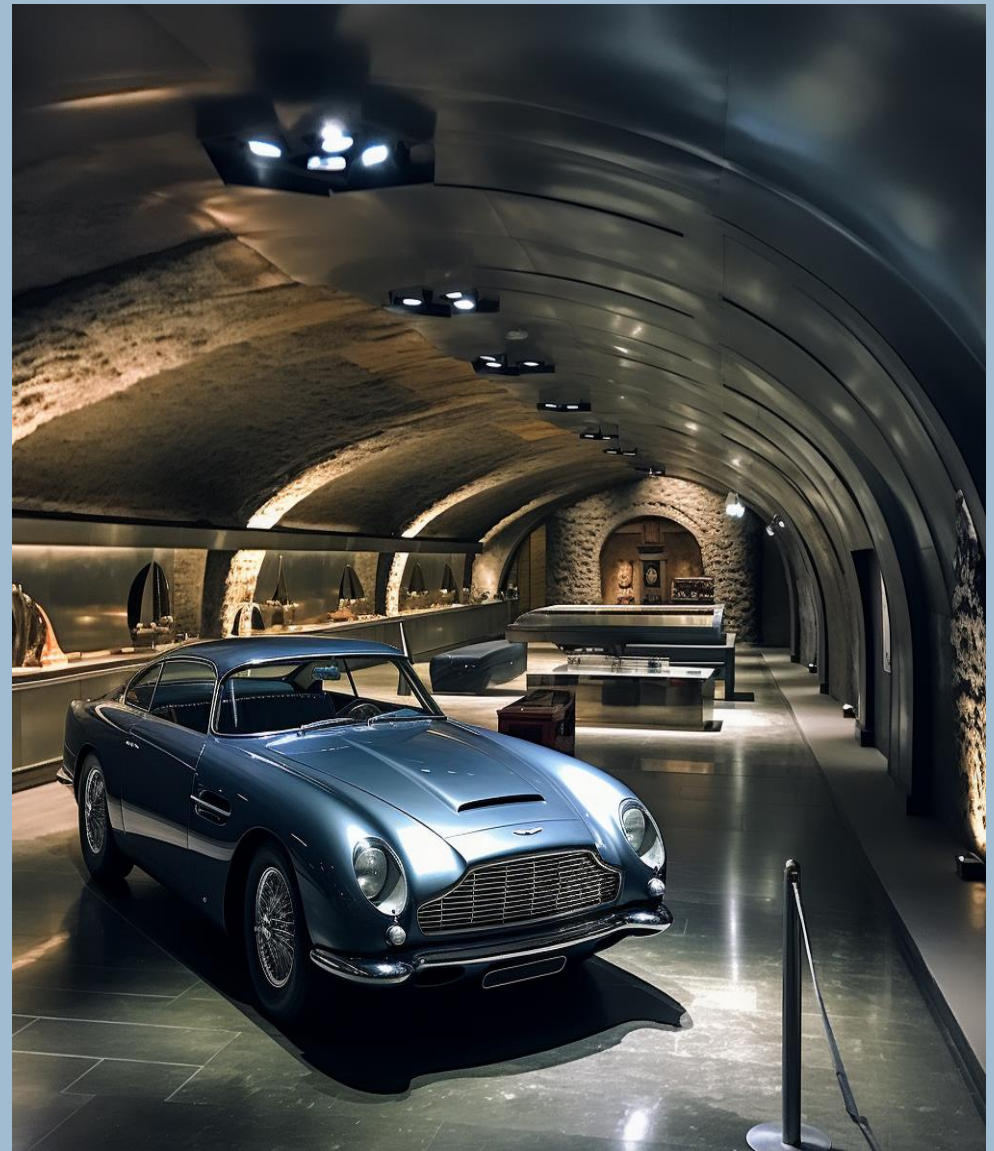
Schedule of work to be completed by WSP on The London Tunnels.



Schedule of work to be completed by WSP on The London Tunnels.



Illustration of the lift building provided by DBOX.



"The London Tunnels Ltd" will recreate James Bond's Q Branch as a Special Operations Executives branch in the very tunnels referred to in the books.



"The London Tunnels Ltd" could be a potential target asset for a company like Warner Brothers to showcase their premium content in a unique space in central London.



Illustrations of how an operational London Tunnels might look created Midjourney.

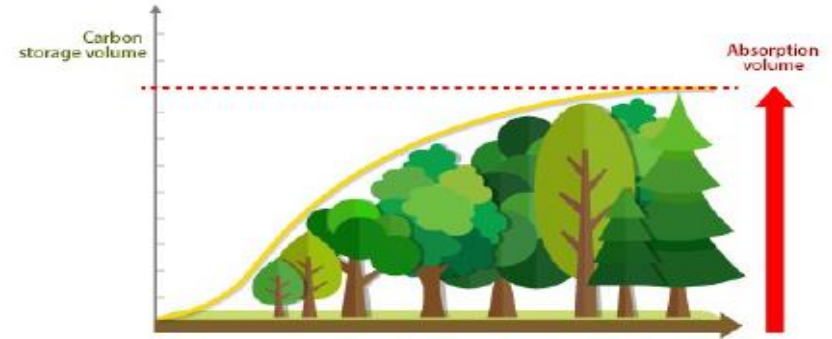


Illustrations of how an operational London Tunnels might look created Midjourney.

CARBON OFFSET

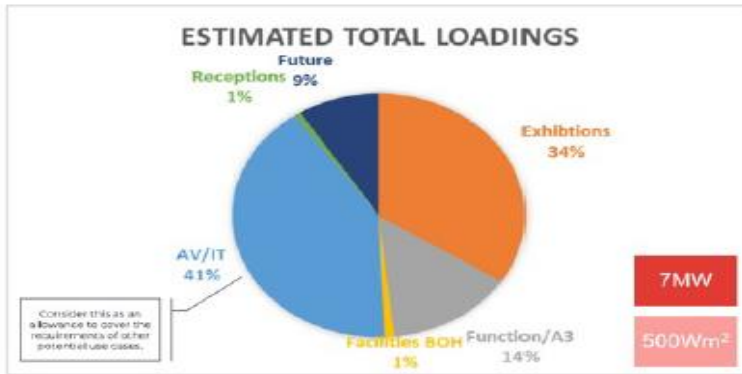


Increasing Carbon Uptake levels through Forest Development Projects



Social Contribution Type Forest Carbon Offset Operating Standards

Electrical Maximum Demand



The London Tunnels are to take hold of an area of land 2-3 times the size of Hyde Park and plant 2,000,000 trees to offset carbon produced.

EDUCATION FACILITY | BASED
AROUND CLIMATE CHANGE

FREE ENTRANCE AND TRANSPORTATION
FOR SCHOOL CHILDREN TO “PROVIDE AN
EDUCATIONAL EXPERIENCE THAT ENRICHES
AND INSPIRES” THEM TO APPRECIATE AND
PROTECT OUR PLANET. *City of London Education Strategy 2019/2023



Children will go free of charge to The London Tunnels every morning.

Upcoming dates:

Wednesday 15 November 2023, all day

Thursday 16 November 2023, all day



Friday 17 November 2023, all day

Saturday 18 November 2023, all day

Sunday 19 November 2023, all day

Wednesday 22 November 2023, all day

Show all dates

Aldwych station (as seen on Yesterday Channel's 'Secrets of the London Underground') is one of London's secret places, holding myths and memories of times gone by. Opened to the public in 1907, it was never as heavily used as originally intended and closed nearly 100 years later in 1994.

The station has had a varied history; from providing shelter to Londoners during the Blitz, to being used for film and TV shoots including *The ABC Murders* (2018), *Darkest Hour* (2017), *Sherlock* (2014), and *Atonement* (2007).

Join our tour to see the one of the former termini of the Piccadilly line – the ticket hall, the original lifts, abandoned platforms and tunnels, and inter-connecting walkways – including some that are very rarely seen by the public.

Key information

Duration: Approx 75 minutes

Times: Weekdays 17.05, 19.00
Weekends 10.05, 12.00, 14.40, 16.35

Location: Meet outside the main entrance of Aldwych Station, Surrey Street, London WC2R 2NE

Tickets*: £44 / £39 concessions

[More tour information](#)

£44 / £39

The London Transport Museum offers a chance to visit Aldwych Station for £44/39 concessions.



Visit

What's on

Hidden London

Shop

Schools

Collections




Saturday 2 September 2023, all day

Sunday 3 September 2023, all day

Wednesday 6 September 2023, all day

Thursday 7 September 2023, all day

 Show all dates

Get an intimate peek into one of London's most intriguing hidden spaces.

Located in Mayfair between Hyde Park Corner and Green Park stations, Down Street had a short life as a working station from 1907 to 1932 but became critical to winning the Second World War when covertly transformed into the Railway Executive Committee's bomb-proof headquarters.

Experience the warren of narrow tunnels where the nation's railways were coordinated, and where Prime Minister Winston Churchill secretly took refuge at the height of the Blitz.

Why not treat yourself to a delicious afternoon tea in stunning surroundings at the nearby Athenaeum Hotel before or after your tour? Details and how to book can be found [here](#).


Key information

Duration: Approx 90 minutes

Times: 10:15, 12:25, 15:20, 17:30 Wednesdays, Thursdays and Sundays
10:15, 12:25, 15:20 Fridays and Saturdays

Location: Meet at the Hyde Park Suite, Athenaeum Hotel, 116 Piccadilly, W1J 7BJ

Tickets*: £90 / £85 concessions

 More tour information

Athenaeum Hotel,
£90 / £85

The London Transport Museum offers a chance to visit Downstreet (Churchills secret station) for £95/85 concessions.